

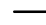


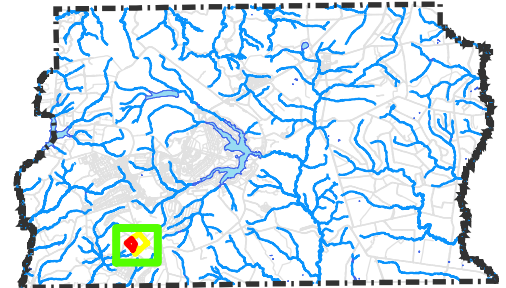

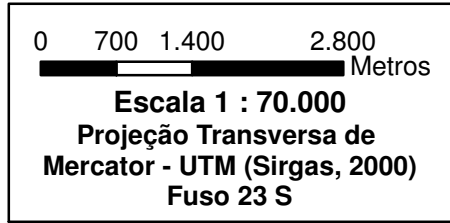
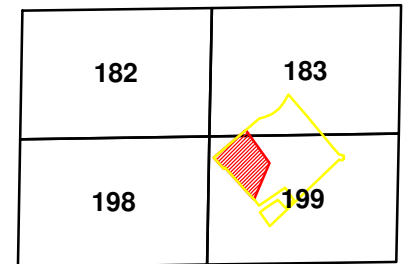


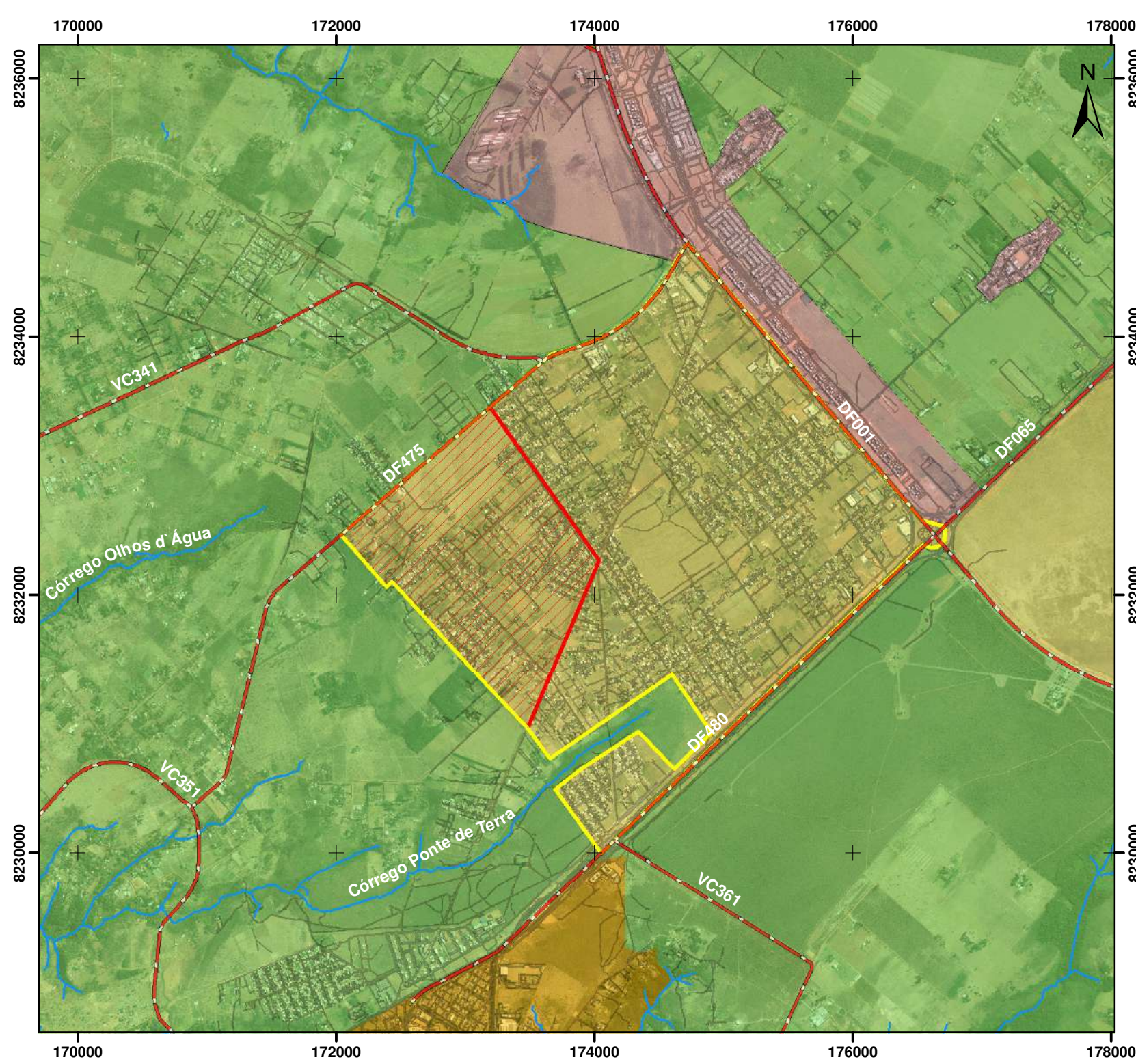
Legenda

-  Hidrografia
-  Rodovia
-  Vias
-  Setor Habitacional Ponte de Terra (764,2 ha)
-  SHPT - Área Complementar (241,47 ha)



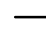




 Setor Habitacional Ponte de Terra - SHPT







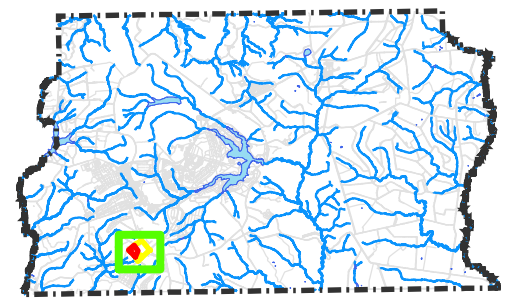



Legenda

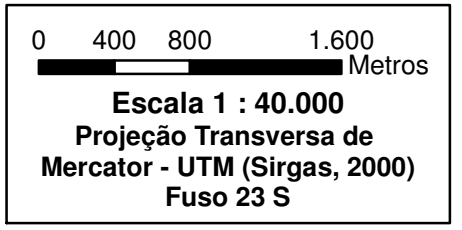
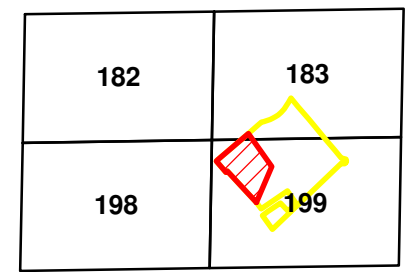
-  Hidrografia
-  Rodovia
-  Vias
-  Setor Habitacional Ponte de Terra (764,2 ha)
-  SHPT - Área Complementar (241,47 ha)

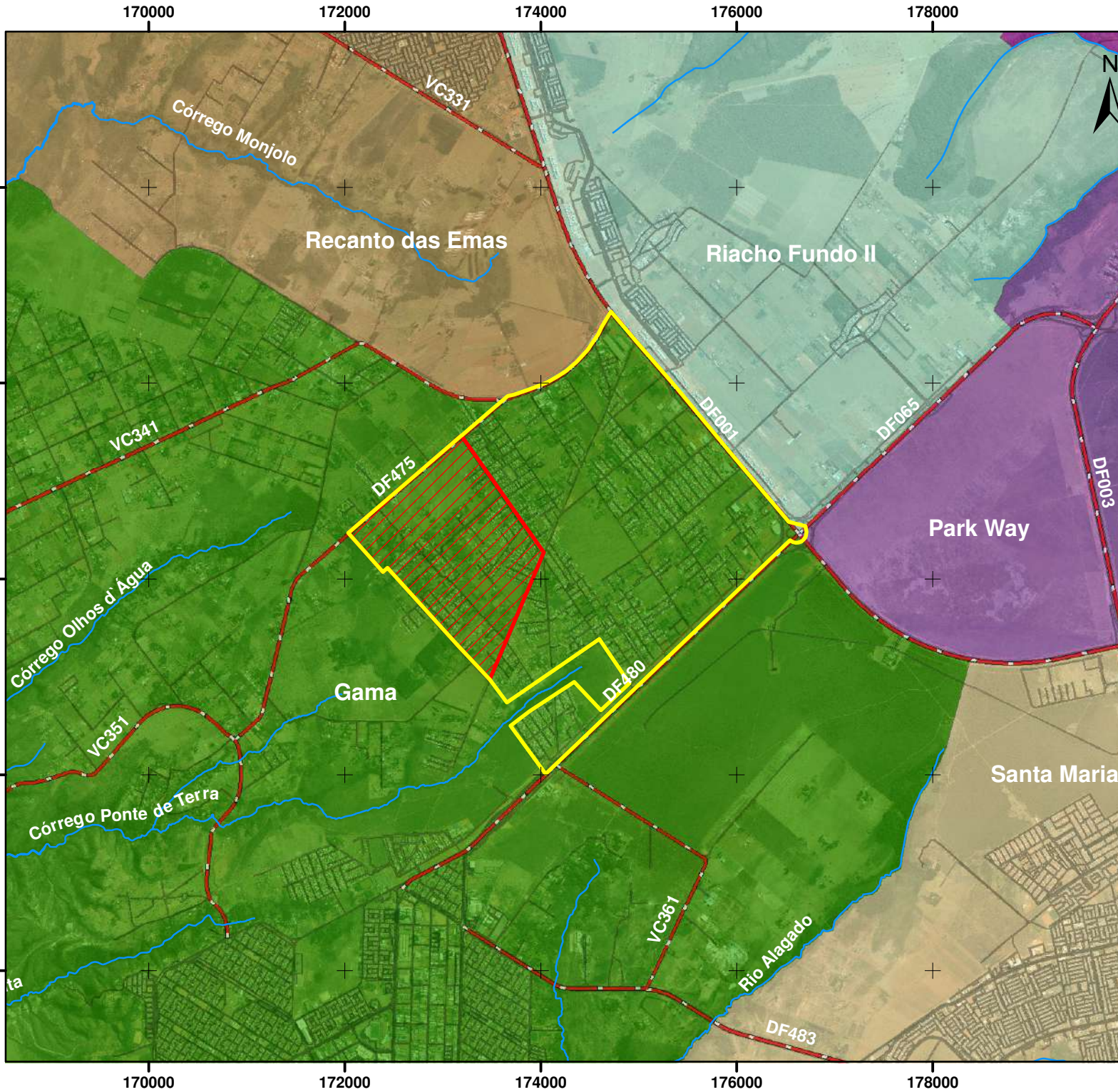
PDOT - 2012

-  Zona Urbana Consolidada
-  Zona Urbana de Uso Controlado II
-  Zona Rural de Uso Controlado
-  Zona Urbana de Expansão e Qualificação



 Setor Habitacional Ponte de Terra - SHPT



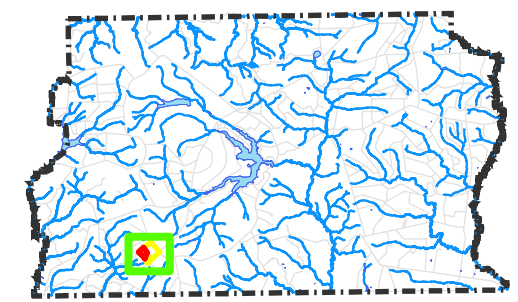


Legenda

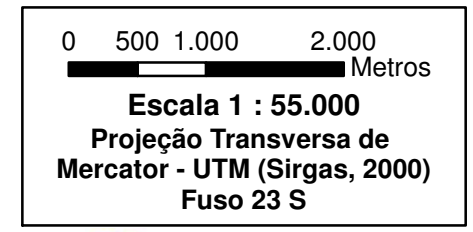
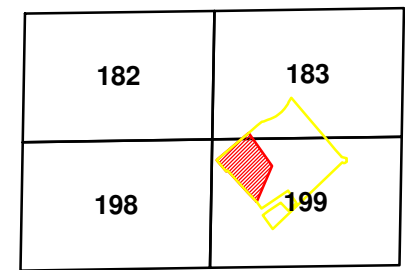
- Hidrografia
- Rodovia
- Vias
- Setor Habitacional Ponte de Terra (764,2 ha)
- SHPT - Área Complementar (241,47 ha)

Regiões Administrativas - RA

- Gama
- Park Way
- Santa Maria
- Recanto das Emas
- Riacho Fundo II



Setor Habitacional Ponte de Terra - SHPT







172000





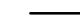


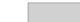
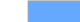

173000

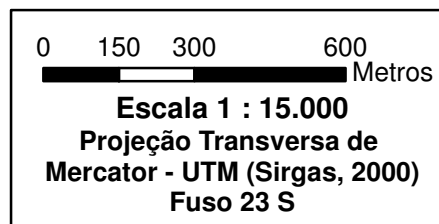
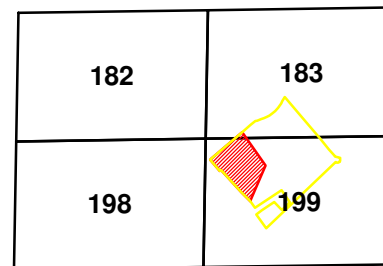
174000

Legenda

-  Hidrografia
-  Rodovia
-  Setor Habitacional Ponte de Terra (764,2 ha)
-  SHPT - Área Complementar (241,47 ha)

Usos do Solo:

-  Via de Circulação Expressa
-  Via de Atividades
-  Ciclovia
-  Via de Circulação
-  Vias Internas
-  RO1
-  RO2
-  CSIR1_NO
-  Inst_EP
-  ELUP_Poligono



172000

173000

174000

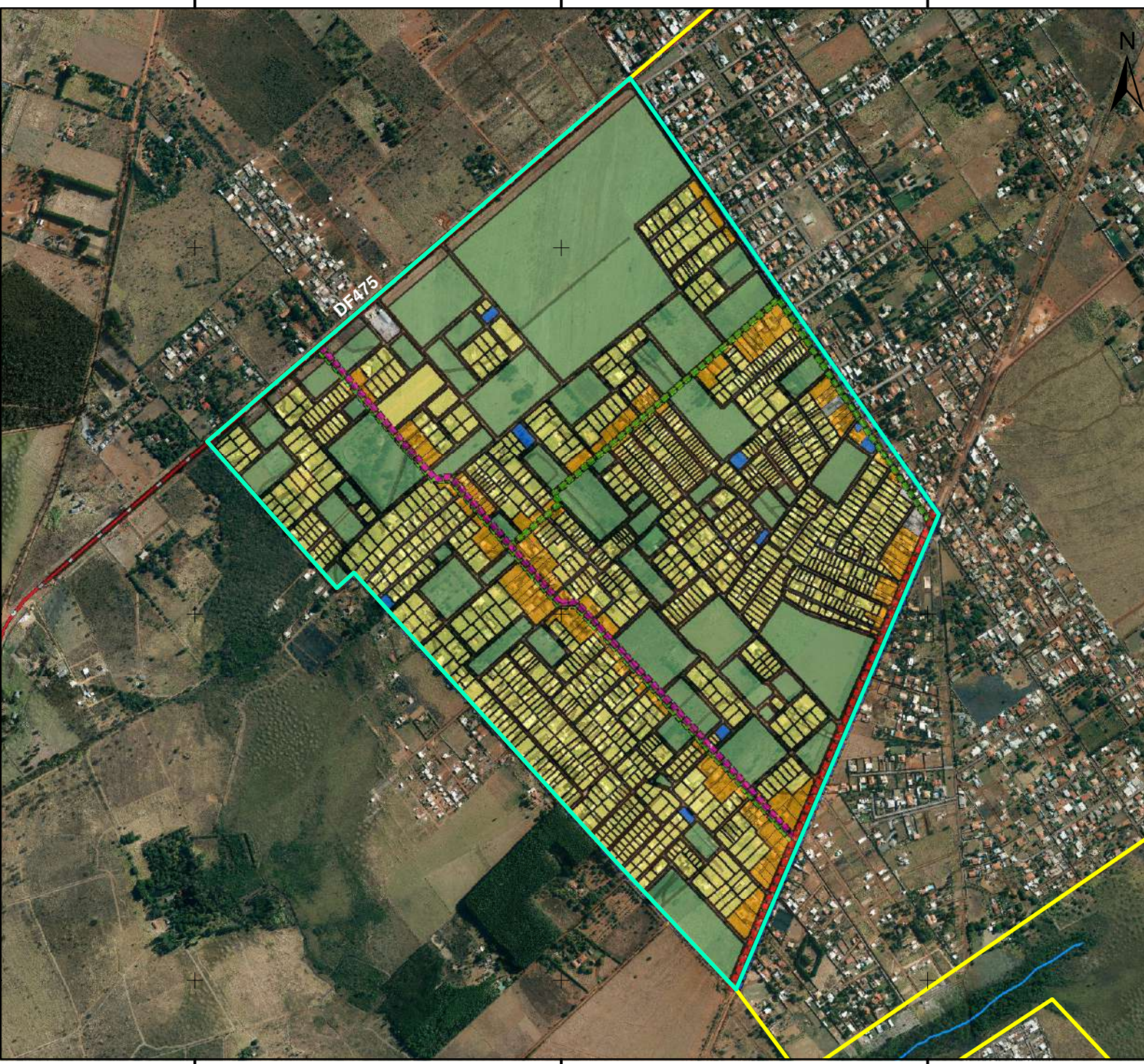
8231000

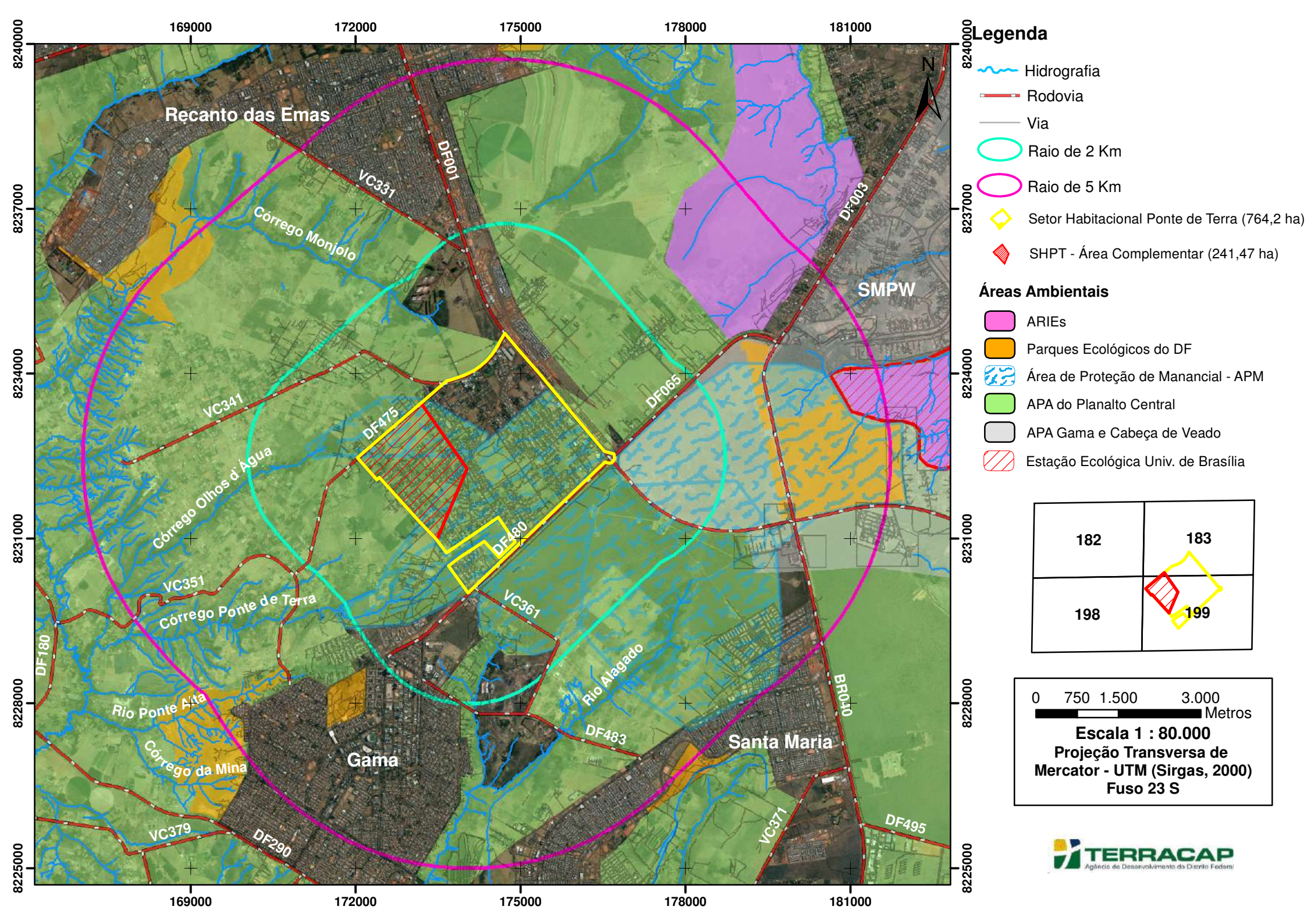
8232000

8233000



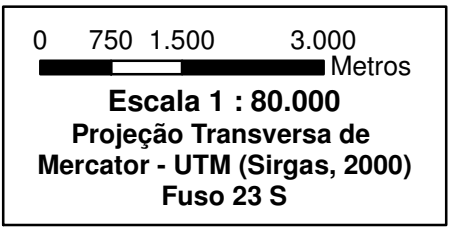
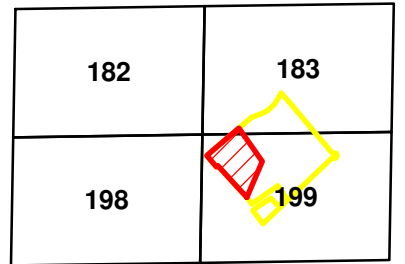
DF475

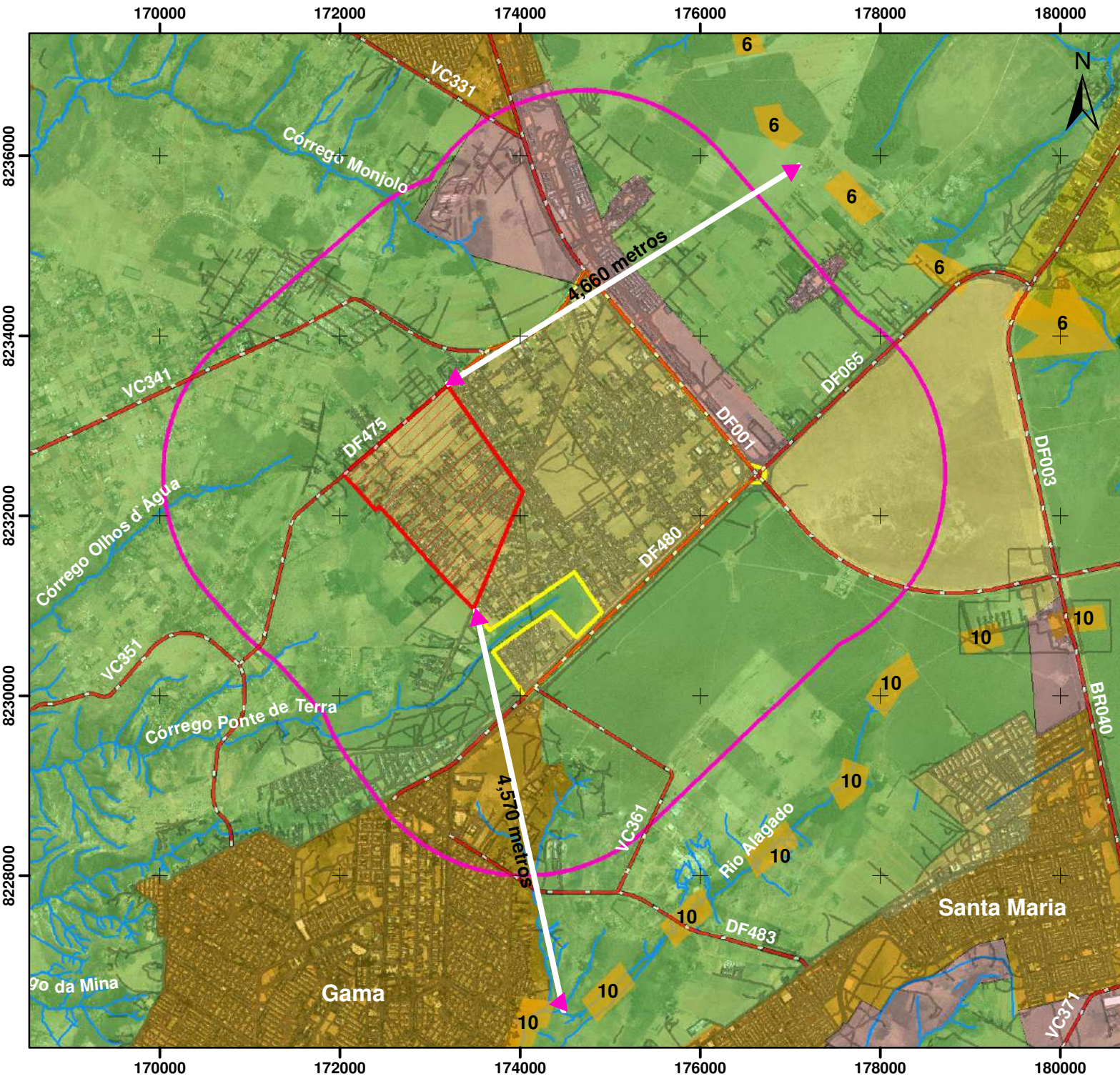





Legenda

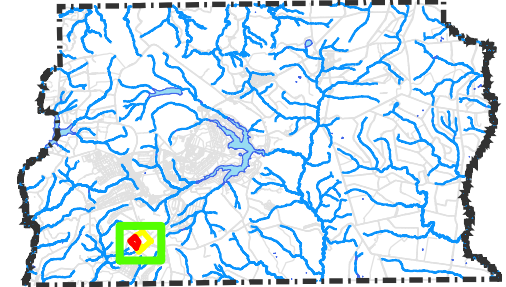
- Hidrografia
 - Rodovia
 - Via
 - Raio de 2 Km
 - Raio de 5 Km
 - Setor Habitacional Ponte de Terra (764,2 ha)
 - SHPT - Área Complementar (241,47 ha)
- #### Áreas Ambientais
- ARIEs
 - Parques Ecológicos do DF
 - Área de Proteção de Manancial - APM
 - APA do Planalto Central
 - APA Gama e Cabeça de Veado
 - Estação Ecológica Univ. de Brasília




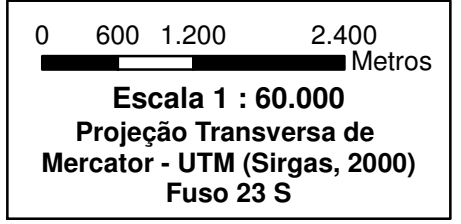
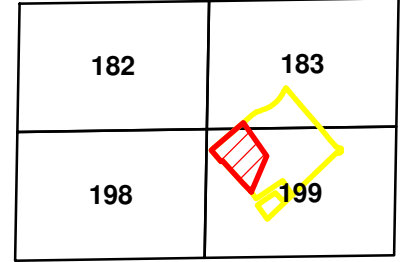


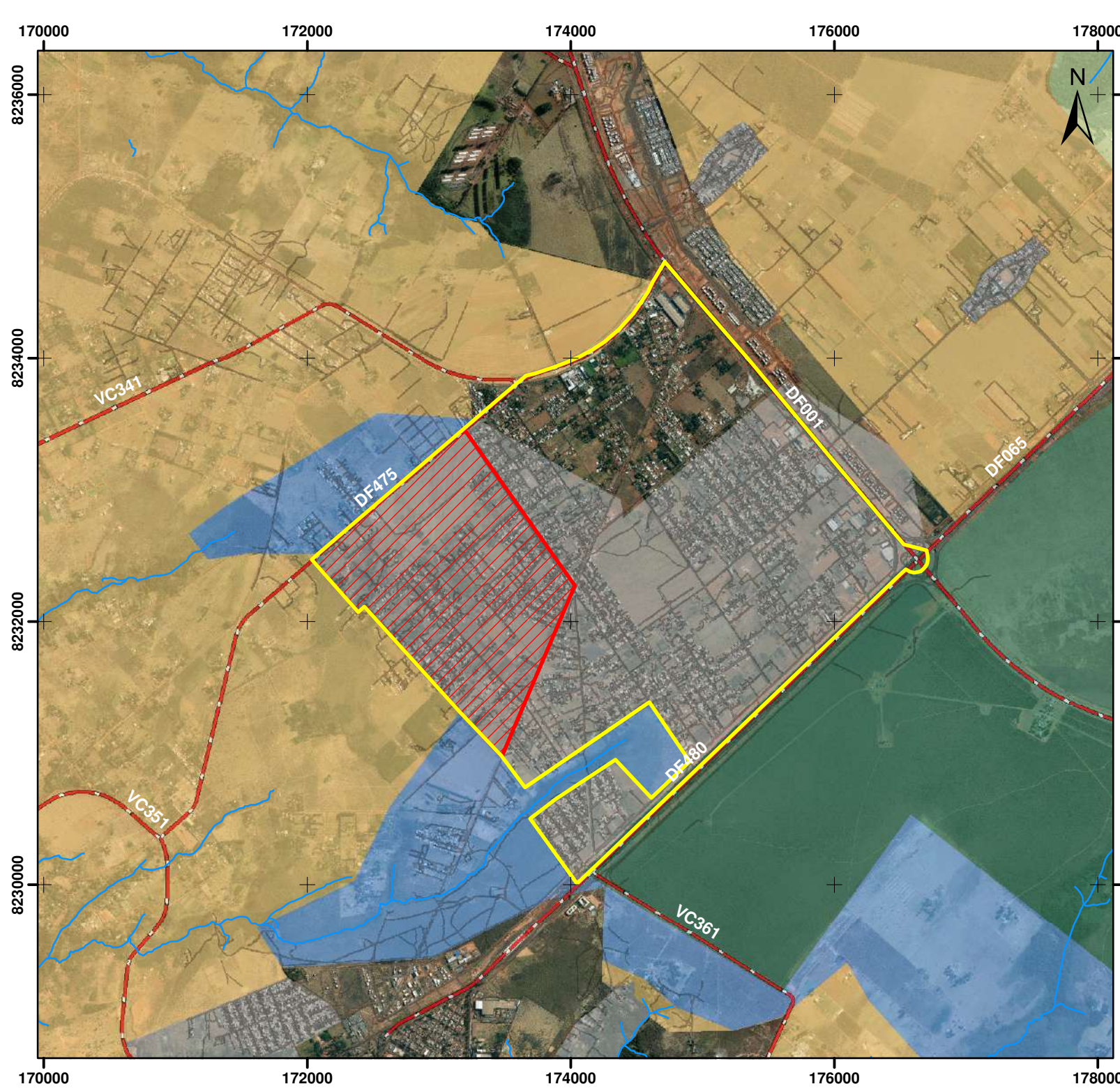
Legenda

-  Hidrografia
 -  Rodovia
 -  Vias
 -  Setor Habitacional Ponte de Terra (764,2 ha)
 -  SHPT - Área Complementar (241,47 ha)
 -  Raio de 2 Km
- PDOT - 2012**
-  Zona Urbana Consolidada
 -  Zona Urbana de Uso Controlado II
 -  Zona Rural de Uso Controlado
 -  Zona Urbana de Expansão e Qualificação








 Setor Habitacional Ponte de Terra - SHPT





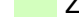


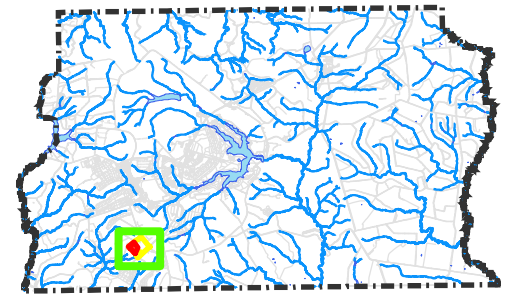



Legenda

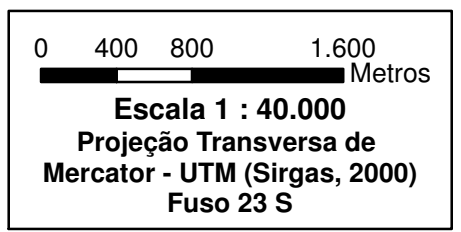
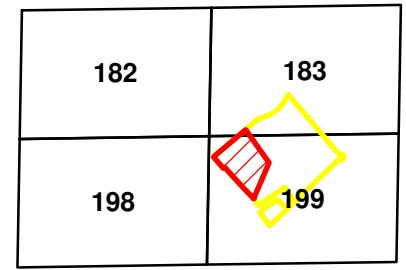
-  Hidrografia
-  Rodovia
-  Via
-  Setor Habitacional Ponte de Terra (764,2 ha)
-  SHPT - Área Complementar (241,47 ha)

Zoneamento Ambiental - APA PC

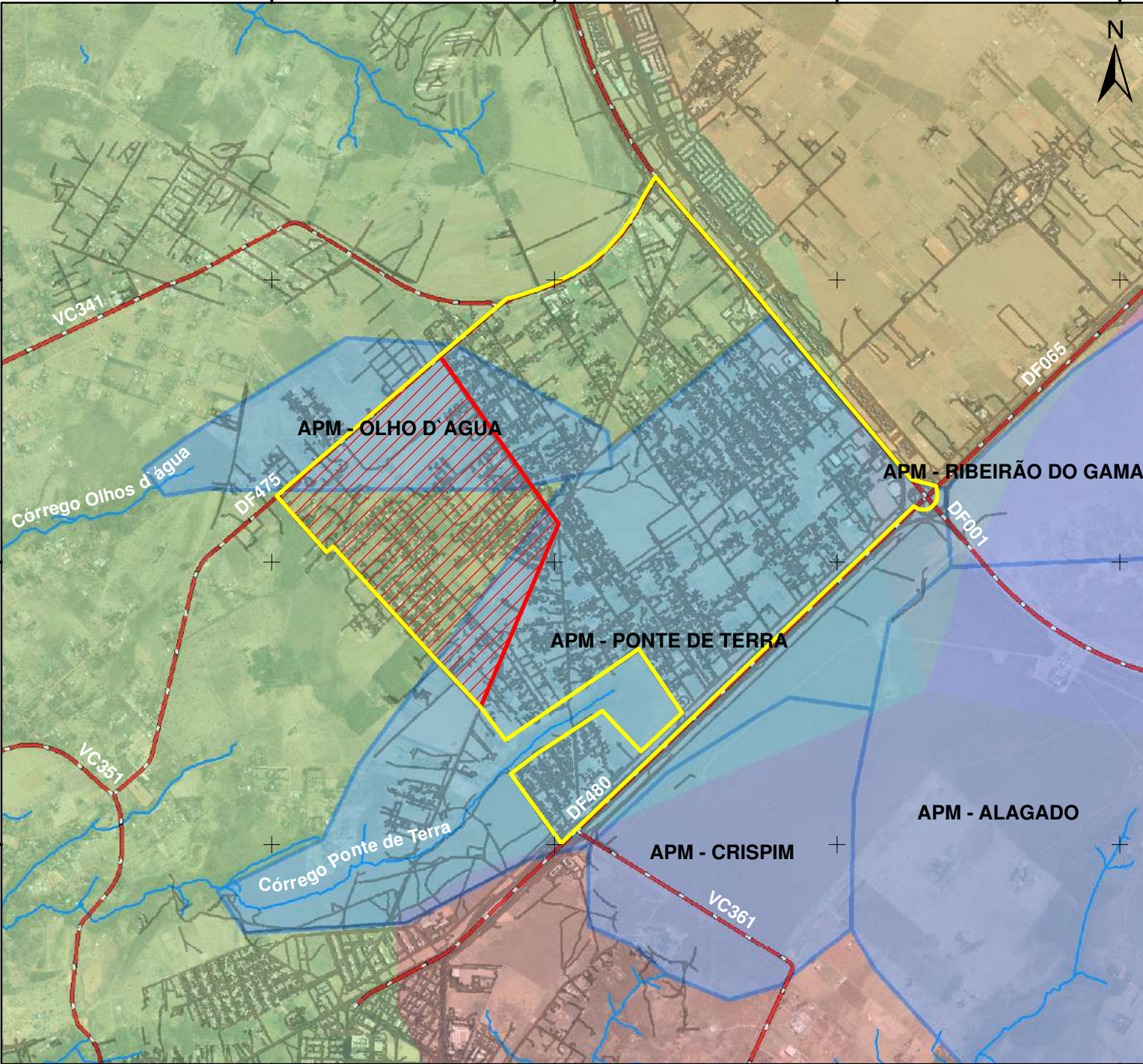
-  Zona Urbana
-  Zona de Uso Sustentável
-  Zona de Proteção de Manancial
-  Zona de Proteção da Arie Capetinga-Taquara
-  Zona de Preservação da Vida Silvestre



 Setor Habitacional Ponte de Terra - SHPT

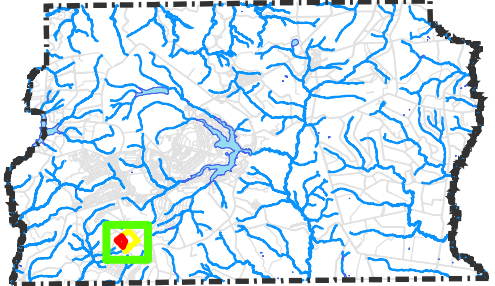


172000 174000 176000 178000

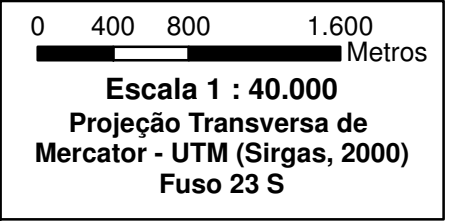
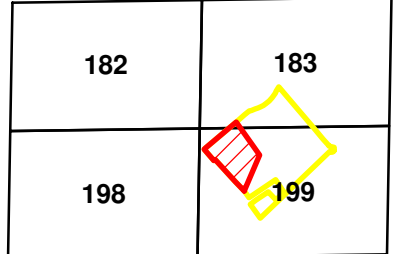


Legenda

- Hidrografia
 - Rodovia
 - Vias
 - Setor Habitacional Ponte de Terra (764,2 ha)
 - SHPT - Área Complementar (241,47 ha)
 - Área de Proteção de Manancial – APM
- Unidades Hidrográficas**
- Rio Ponte Alta
 - Rio Alagado
 - Ribeirão do Gama
 - Ribeirão Riacho Fundo



Setor Habitacional Ponte de Terra - SHPT



172000 174000 176000 178000

8234000

8232000

8230000

8234000

8232000







8230000

172000

174000

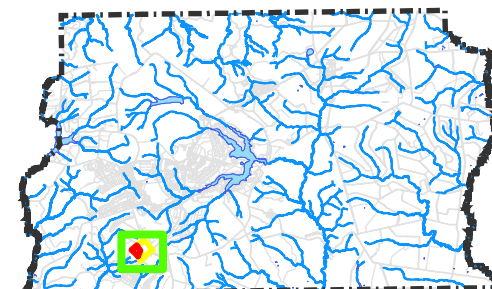
176000


Legenda

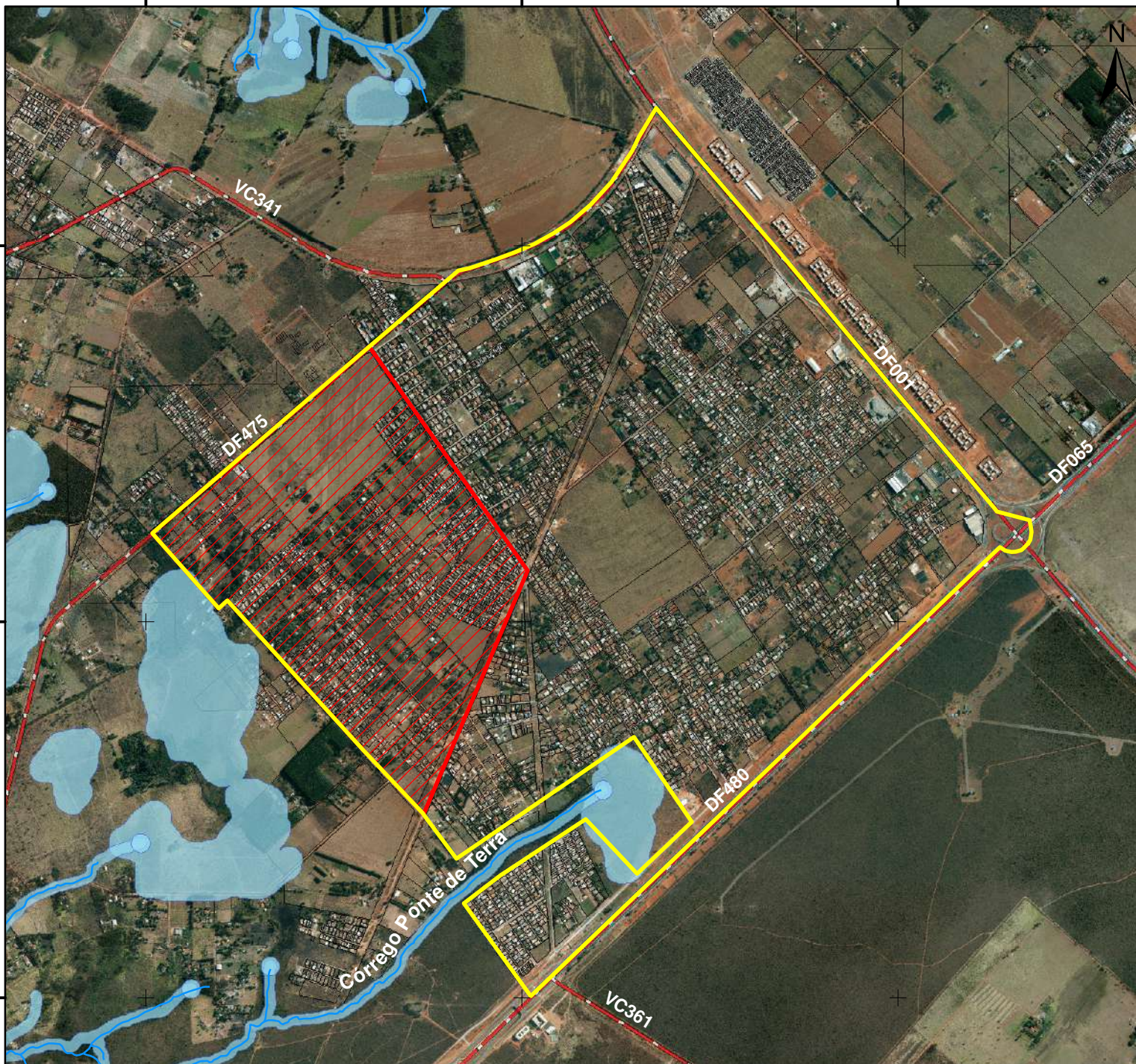
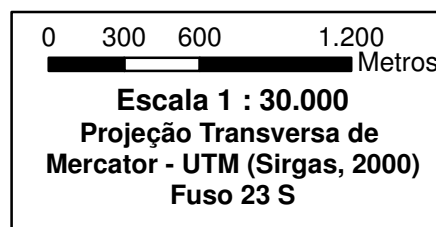
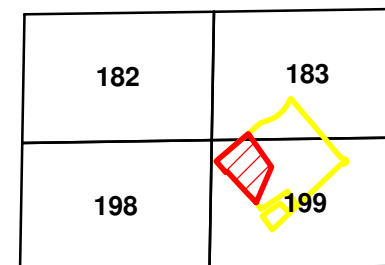
-  Hidrografia
-  Rodovia
-  Vias
-  Setor Habitacional Ponte de Terra (764,2 ha)
-  SHPT - Área Complementar (241,47 ha)
-  Área de Preservação Permanente - APP:

APP de Córrego - 30 m
 APP de Nascente - 50 m
 APP de Áreas Úmidas - 50 m

Fonte: ZEE/DF



 Setor Habitacional Ponte de Terra - SHPT



172000

174000

176000

8234000

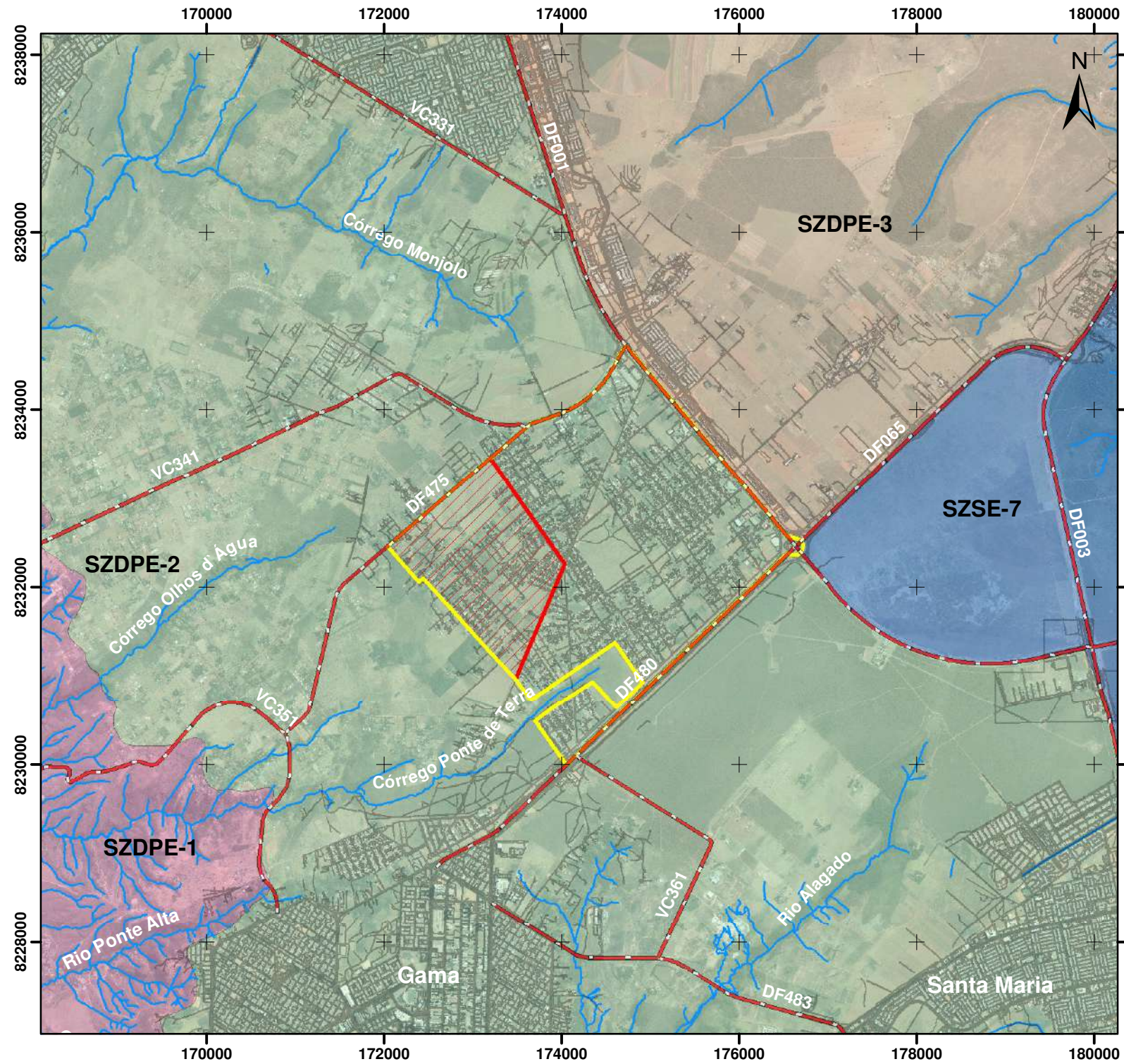
8232000

8230000






8234000

8232000

8230000



Legenda

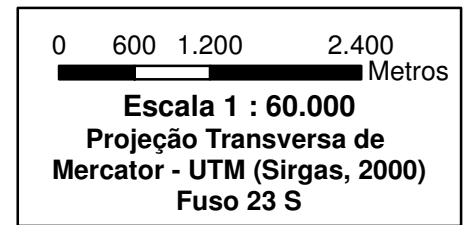
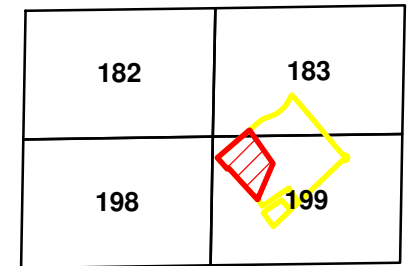
-  Hidrografia
-  Rodovia
-  Via
-  Setor Habitacional Ponte de Terra (764,2 ha)
-  SHPT - Área Complementar (241,47 ha)

Subzona Zona Ecológico-Econômica de Dinamização Produtiva com Equidade

-  SZDPE - 1
-  SZDPE - 2
-  SZDPE - 3

Subzona de Diversificação Produtiva e de Serviços Ecosistêmicos

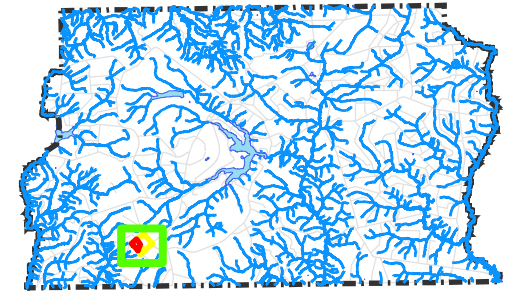
-  SZSE - 7



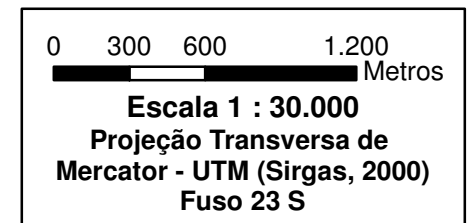
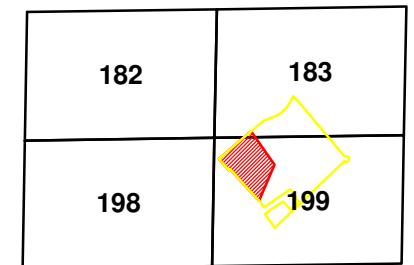


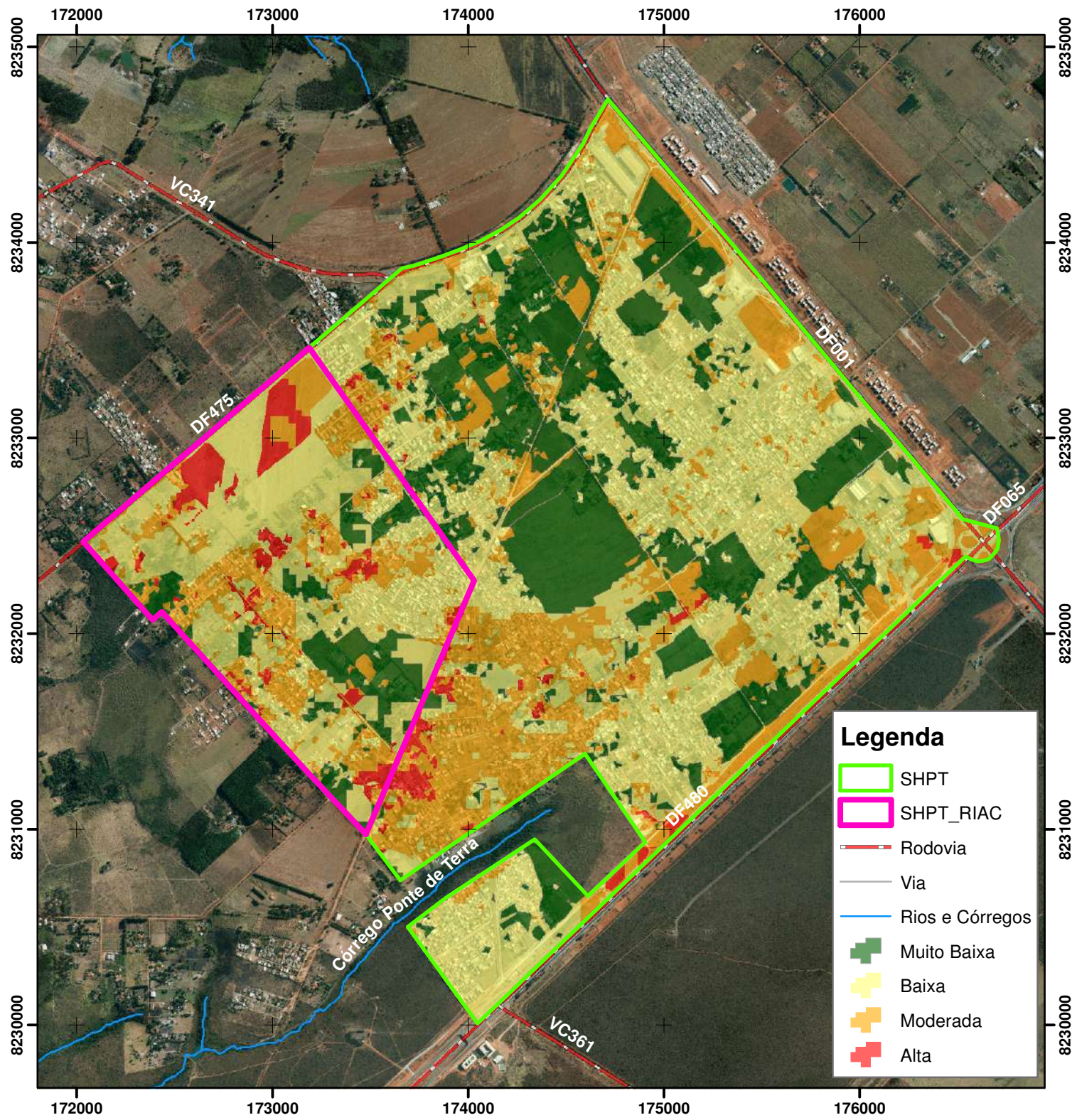
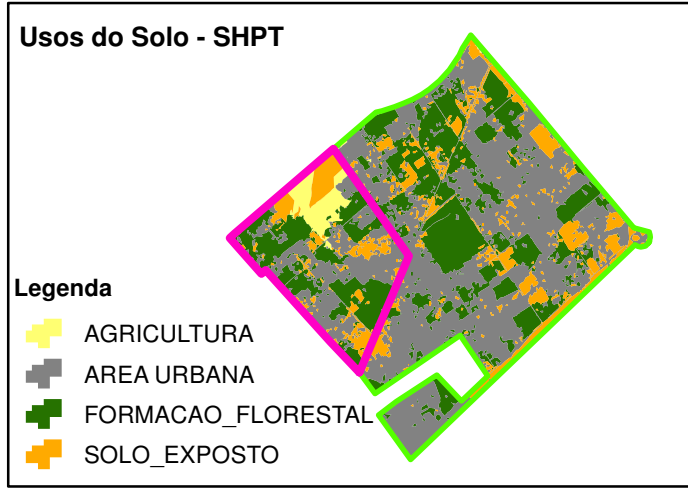
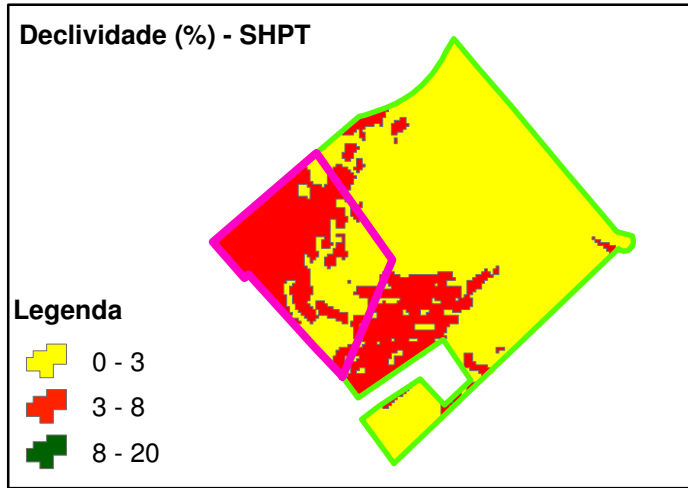
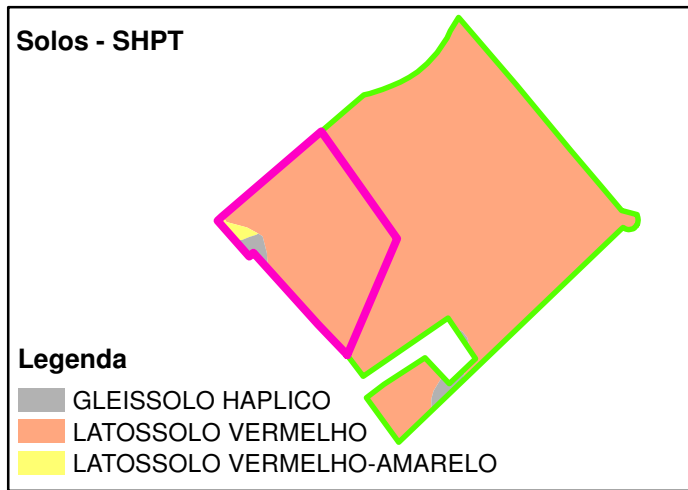
Legenda

- Pontos de Coleta de Água Subterrânea
- ~ Hidrografia
- Rodovia
- Vias
- Setor Habitacional Ponte de Terra (764,2 ha)
- SHPT - Área Complementar (241,47 ha)








 Setor Habitacional Ponte de Terra - SHPT








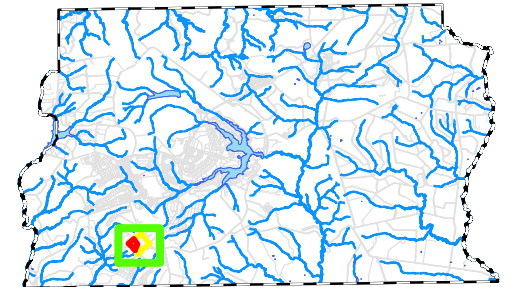
171000 172000 173000 174000 175000 176000 177000


Legenda

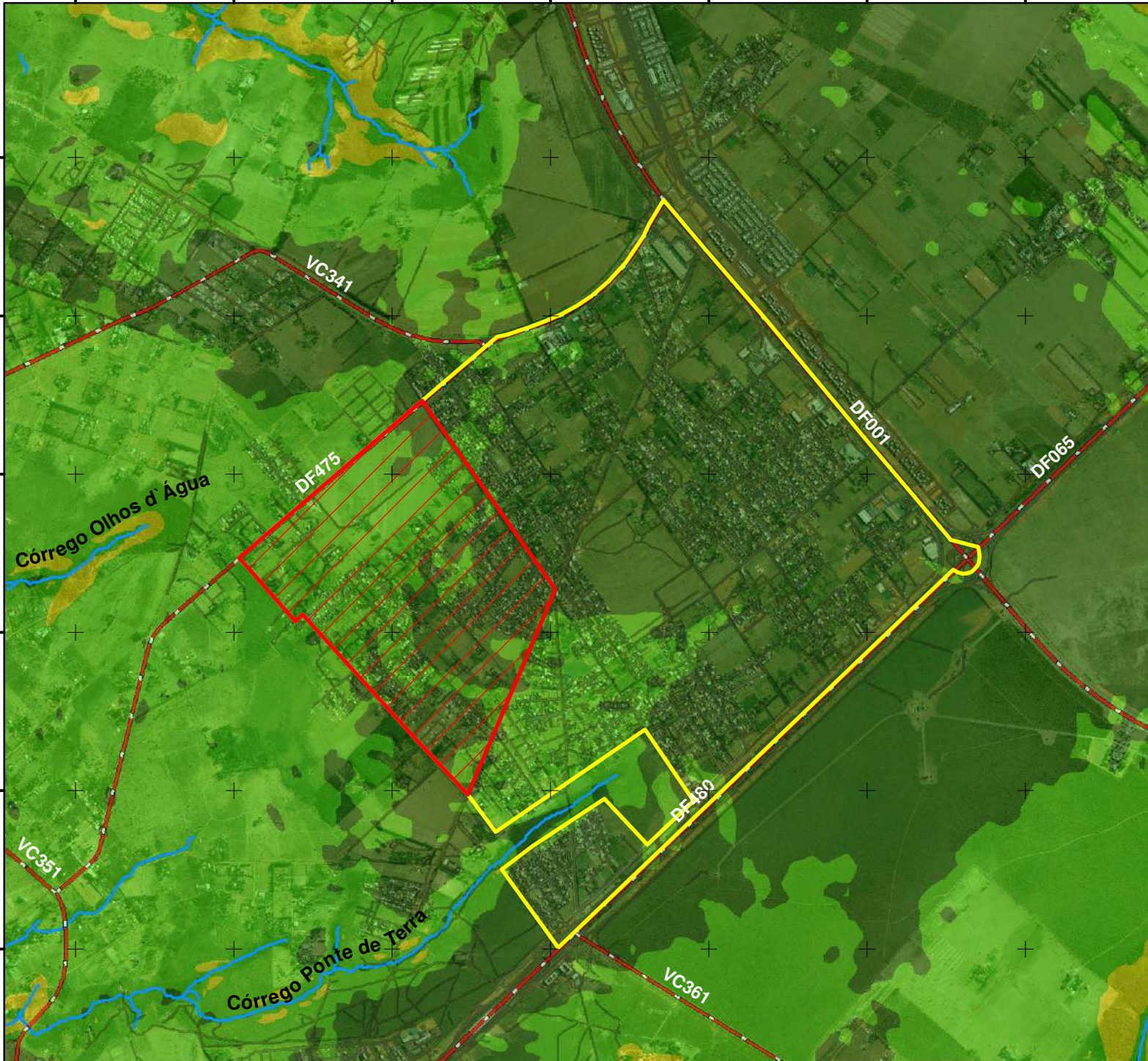
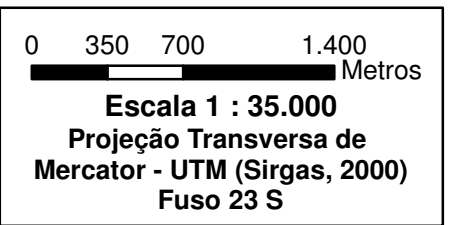
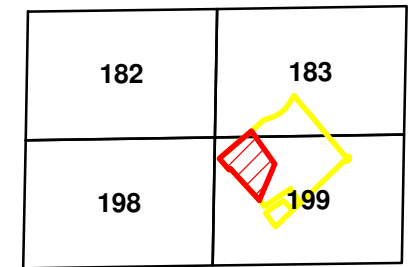
-  Hidrografia
-  Rodovia
-  Vias
-  Setor Habitacional Ponte de Terra (764,2 ha)
-  SHPT - Área Complementar (241,47 ha)

Declividade (%)

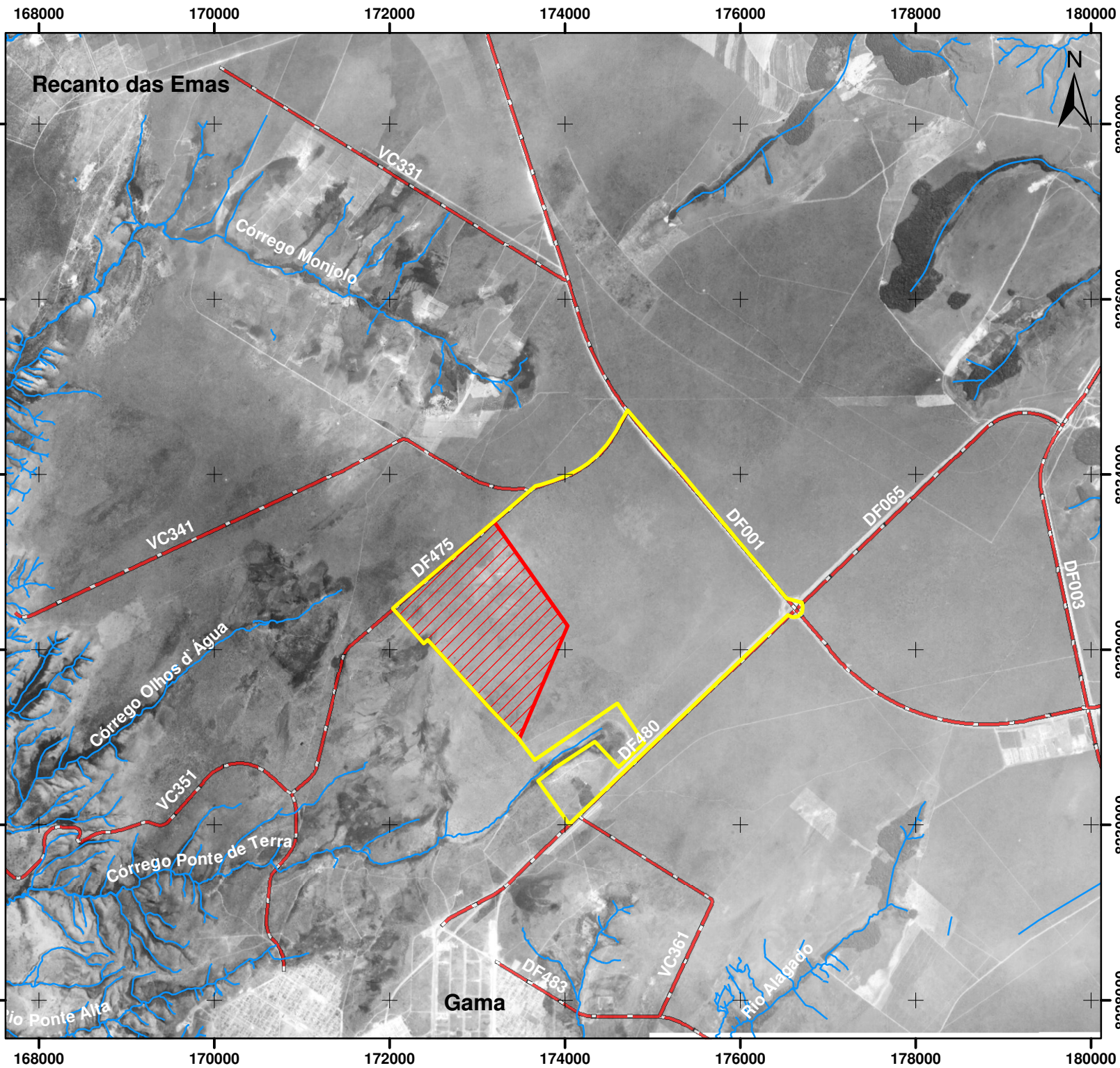
-  0 - 3
-  3 - 8
-  8 - 20





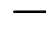


 Setor Habitacional Ponte de Terra - SHPT

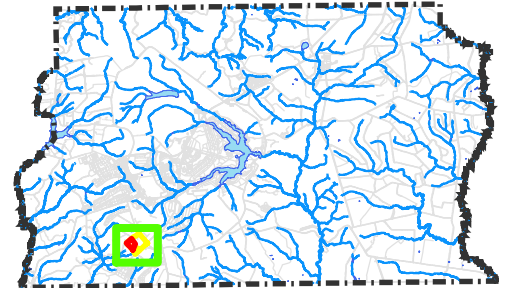



171000 172000 173000 174000 175000 176000 177000

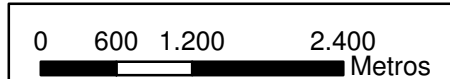
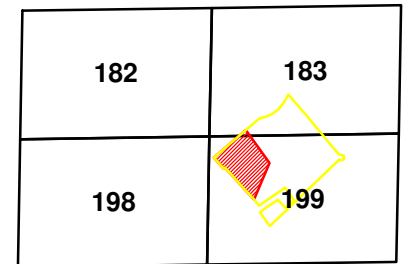


Legenda

-  Hidrografia
-  Rodovia
-  Vias
-  Setor Habitacional Ponte de Terra (764,2 ha)
-  SHPT - Área Complementar (241,47 ha)

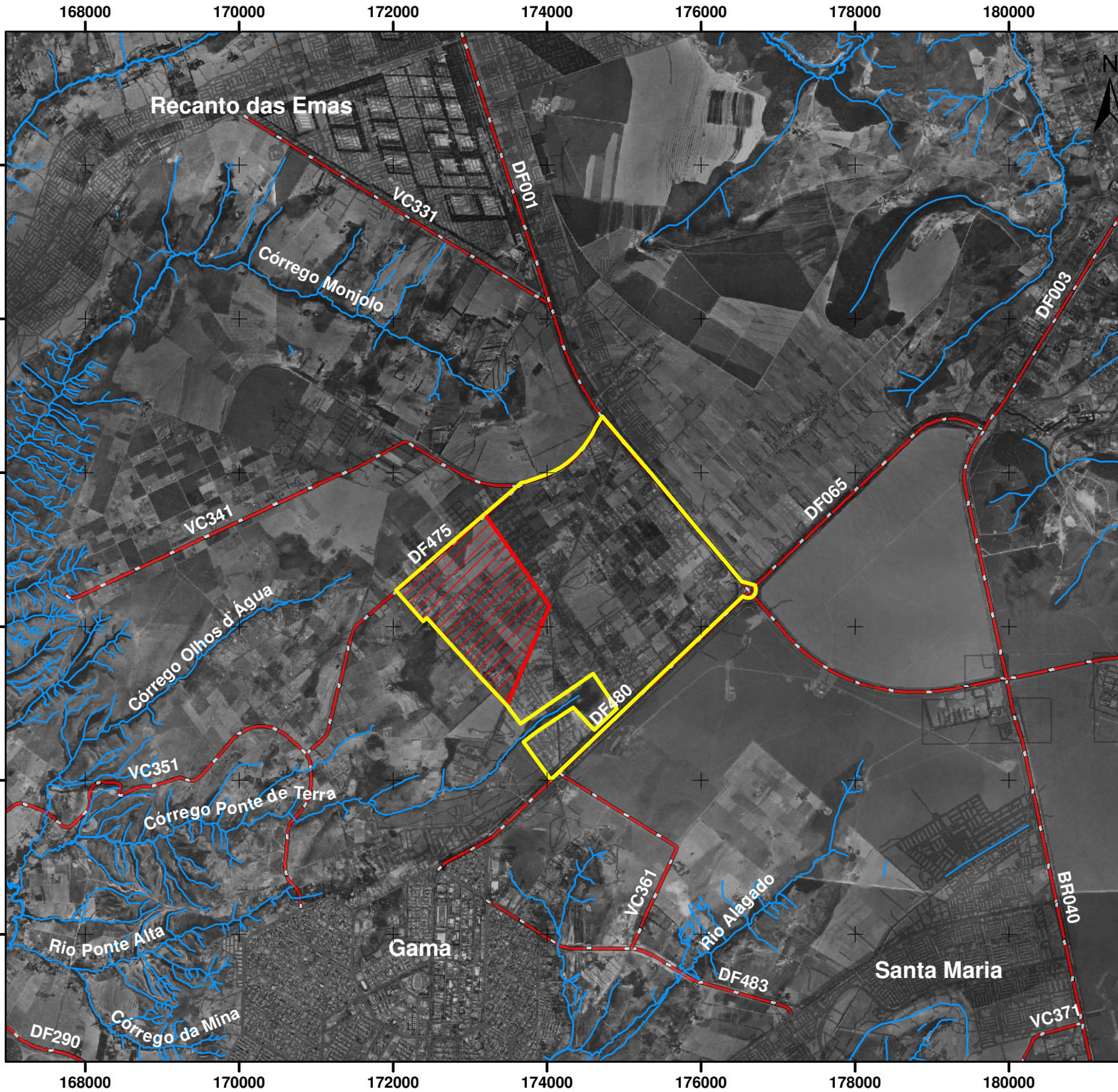


 Setor Habitacional Ponte de Terra - SHPT



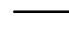




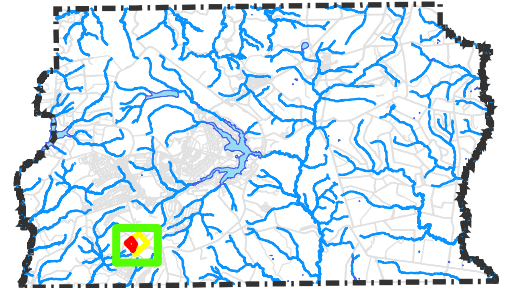
Escala 1 : 60.000
Projeção Transversa de Mercator - UTM (Sirgas, 2000)
Fuso 23 S




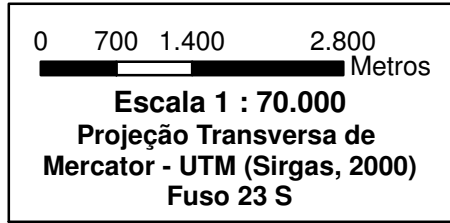
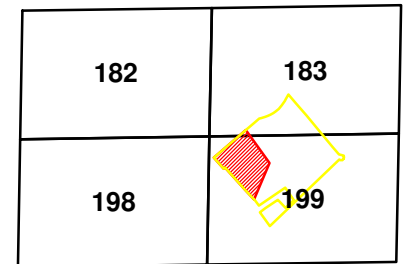


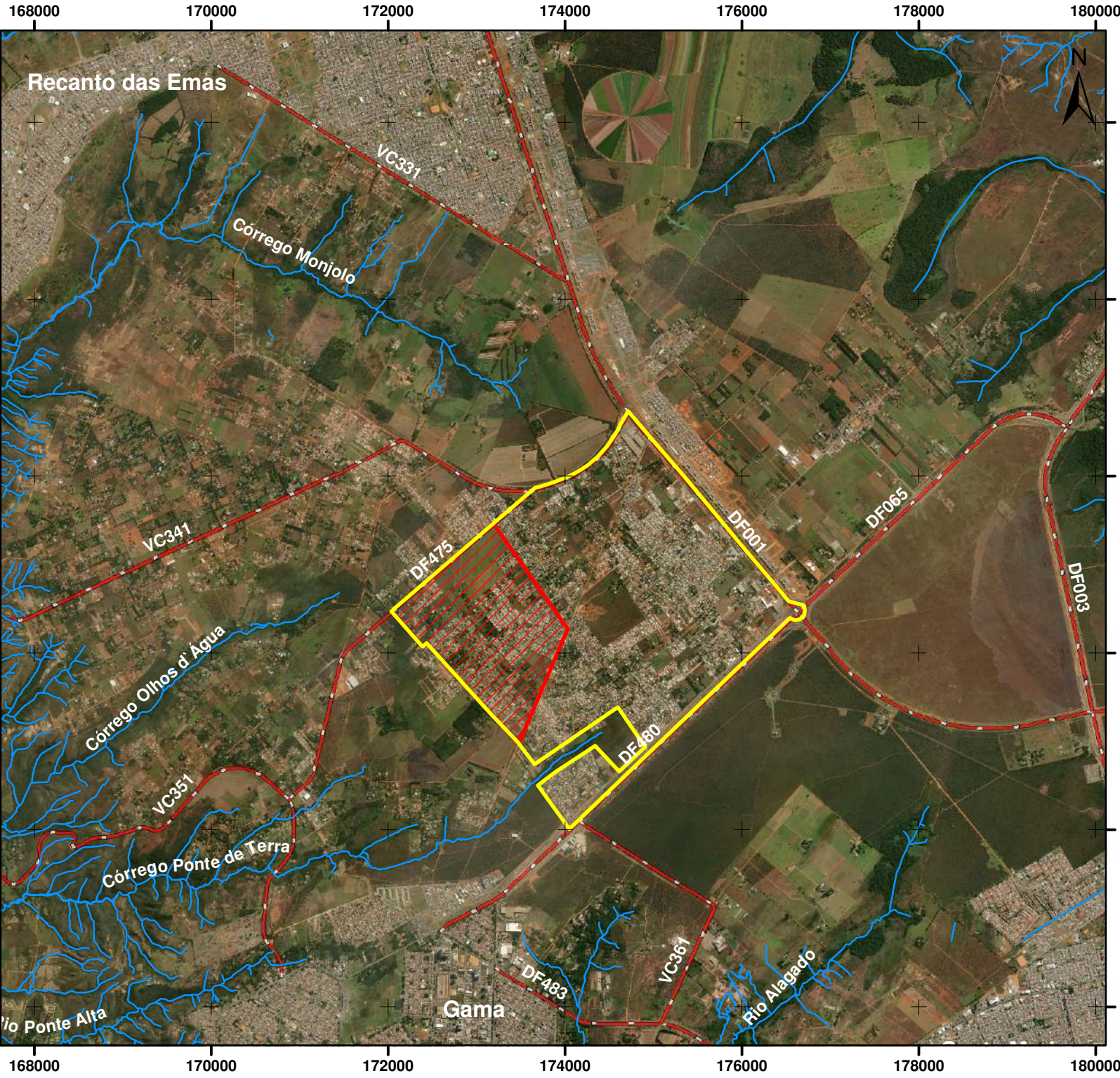
Legenda

-  Hidrografia
-  Rodovia
-  Vias
-  Setor Habitacional Ponte de Terra (764,2 ha)
-  SHPT - Área Complementar (241,47 ha)



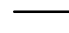




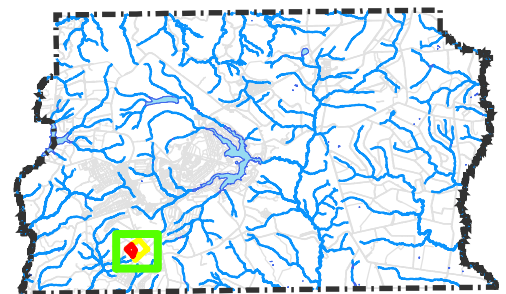
 Setor Habitacional Ponte de Terra - SHPT




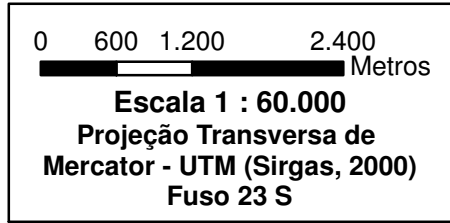
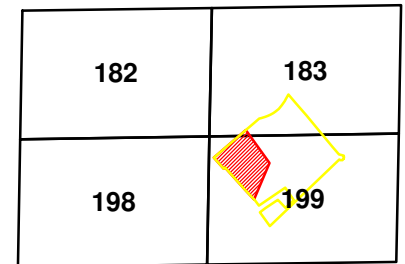


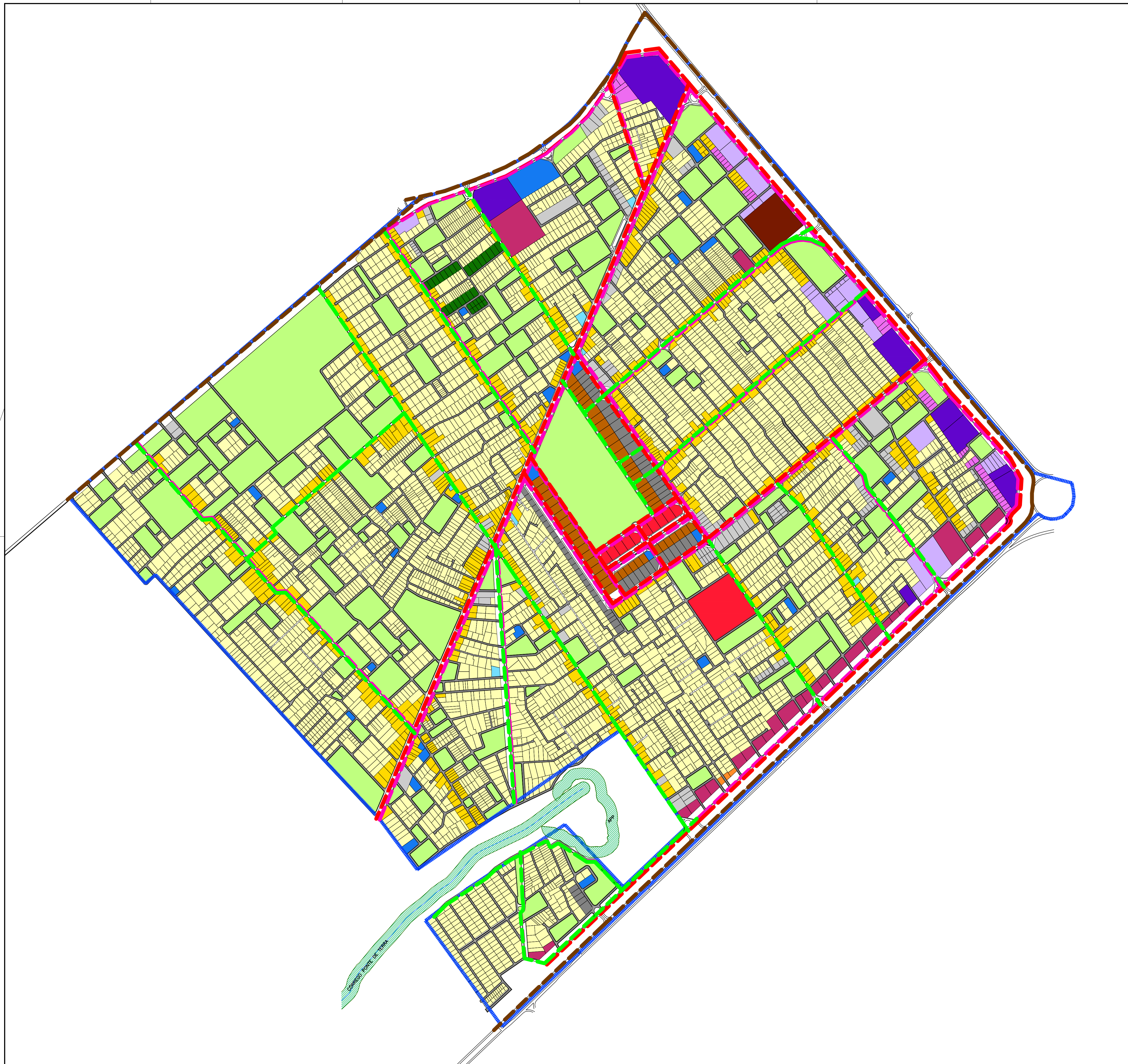
Legenda

-  Hidrografia
-  Rodovia
-  Vias
-  Setor Habitacional Ponte de Terra (764,2 ha)
-  SHPT - Área Complementar (241,47 ha)



 Setor Habitacional Ponte de Terra - SHPT





LEGENDA

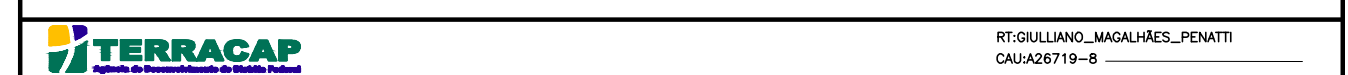
Usos

- RE 3
- RO 1
- RO 2
- CSIR 1 NO
- CSIR 2 NO
- CSIR 2
- CSIR 3
- CSII 2
- CSII 3
- CSIndR
- CSInd 1
- CSInd 2
- Inst
- Inst EP
- PAC 3
- ELUP
- APP

Vias

- Vias de Atividades
- Vias de Circulação
- Vias Locais
- Vias Compartilhadas
- Vias de Circulação Expressa
- Ciclovias
- Poligonal do Setor

NOTA:



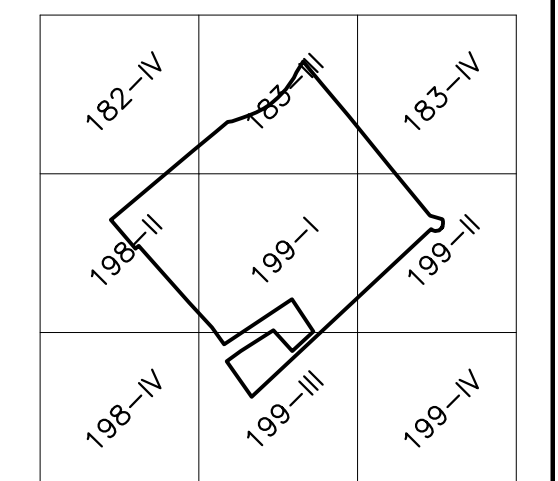
PROPOSTA DE USO E OCUPAÇÃO

URBS- 002/12-003/12		RA II - GAMA / DF	
004/12-009/19		PROPOSTA DE USO E OCUPAÇÃO	
SETOR HABITACIONAL PONTE DE TERRA			
PLANTA_GERAL	FOLHA: 01/01	ESCALA: 1:8.500	DATA: JULHO/2019
PROJETO: GEPRO/TERRACAP	REVISÃO:	ANALISTA:	VISTO: COORDENADORA/CSFAG
		APROVO: CHEFE DE UNIDADE/UPAR	



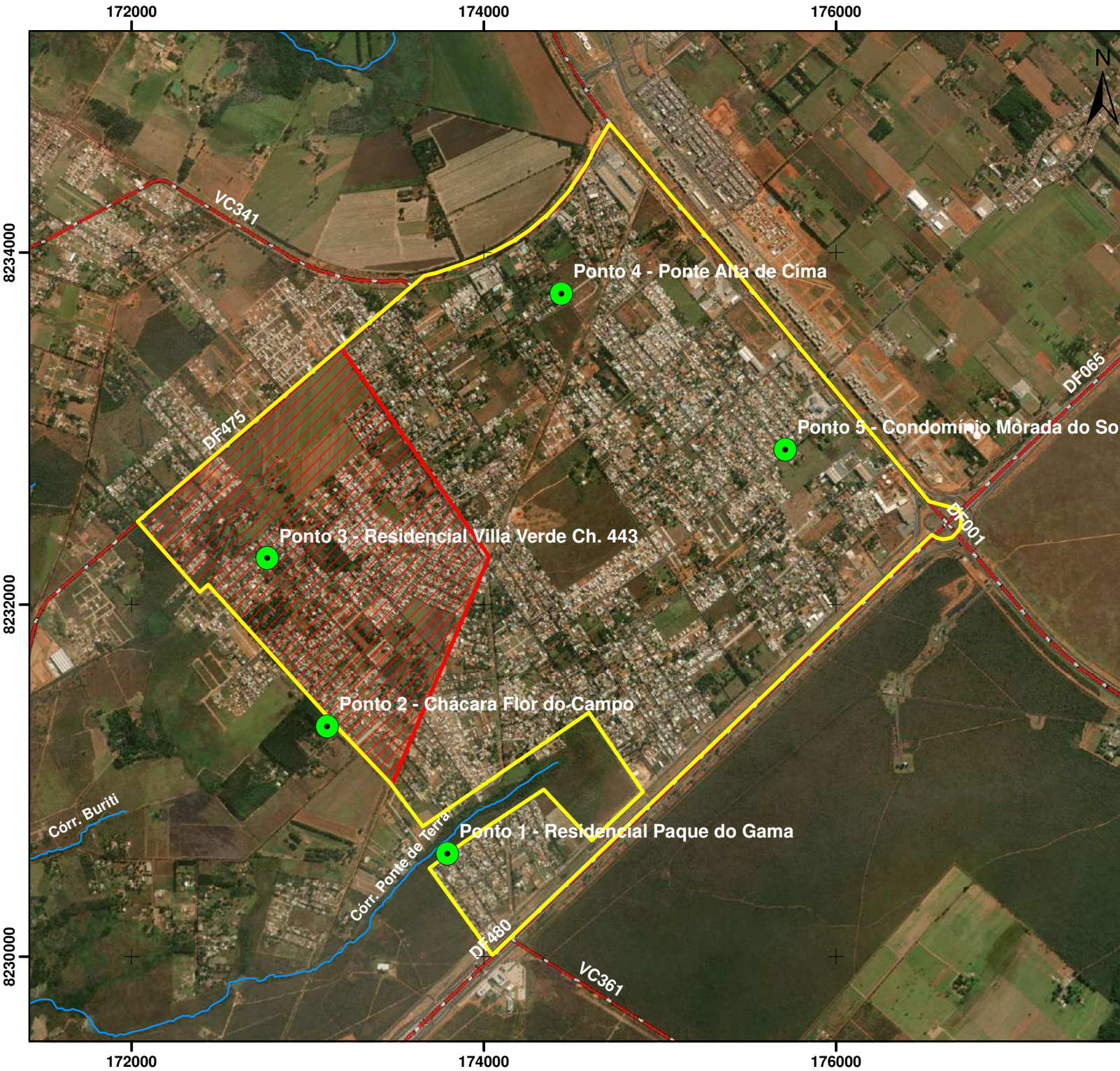
SECRETARIA DE ESTADO DE DESENVOLVIMENTO URBANO E HABITAÇÃO

ARTICULAÇÃO DAS FOLHAS



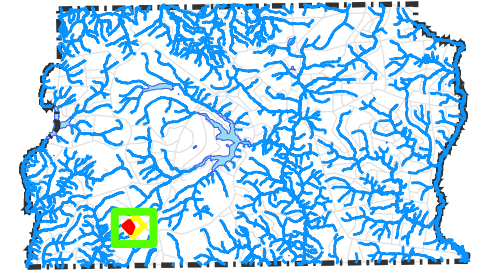
GAMA-RAII

Kr = 1.0007383



Legenda

- Pontos de Monitoramento de Água
- ~ Hidrografia
- Rodovia
- Vias
- Setor Habitacional Ponte de Terra (764,2 ha)
- SHPT - Área Complementar (241,47 ha)



 Setor Habitacional Ponte de Terra - SHPT

